

An impressionistic painting of a Christmas scene. The background is dominated by warm, textured brushstrokes in shades of red, orange, and brown, suggesting a festive atmosphere. In the foreground, a woman in a white dress with blue accents is seated on the left, and a man in a dark suit is seated on the right. The lighting is soft and warm, with three small, glowing circular lights visible in the upper portion of the image. The overall style is expressive and painterly.

THOMPSON'S
ALDEBURGH — EST. 1982

CHRISTMAS EXHIBITION 2022



JONATHAN ROBERTSON *Knitters* Oil on canvas 20 x 20 inches

IAN RAWLLINGS
Big Red Telephone
(telephone included!)

Soft pastel and pastel pencil
23 x 31 inches



CHRISTMAS EXHIBITION 2022

We request the pleasure of your company at the Private View on
Saturday 3rd December 2022 10am-4pm

All paintings are for sale on receipt of this catalogue.
More works can be viewed on our website

www.thompsonsgallery.com

THOMPSON'S
ALDEBURGH EST. 1982

175 High Street, Aldeburgh
Suffolk. IP15 5AN

Tel: +44 (0)1728 453 743

john@thompsonsgallery.co.uk

www.thompsonsgallery.com

Monday to Friday: 10am - 5pm

Saturday: 10am - 5pm

Sunday 11am-5pm

CARL MELEGARI



Delilah Oil on canvas 40 x 30 inches

JOHN PIPER CH (1903-1992)



Inglesham, Wiltshire: rustic medieval interior. Ed. 64/70, Levinson 132 Lithograph 21 x 28 inches

ANN SHRAGER NEAC



Young Man and Zebra
Oil on canvas 19 x19 inches



Mahout on his Elephant
Oil on canvas 19 x19 inches

ANDREW MACARA RBA NEAC



Skiing towards the Dolomites, Val Gardena, Italy Oil on canvas 20 x 24 inches

STEPHANIE REW



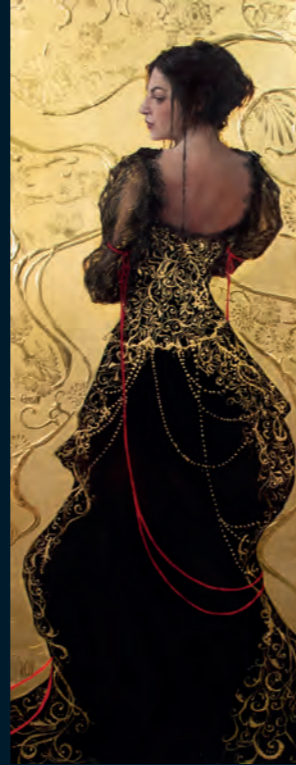
Phaedra I

Oil, Egg Tempera & 24ct Gold Lea
24 x 9 inches



Ariadne

Oil, Egg Tempera & 24ct Gold Lea
24 x 18 inches



Phaedra II

Oil, Egg Tempera & 24ct Gold Lea
24 x 9 inches

BERNARD DUNSTAN RA (1920-2017)



Sinalunga, Evening, (Piazza Giuseppe Garibaldi), 3/75 Oil on board 9 x 12 inches

DAVID SAWYER RBA



Along the Beach at Aldeburgh Oil on board 8 x 24 inches



July Heatwave 2022, Crag Path, Aldeburgh Oil on board 16 x 28 inches

EMMA WILLIAMS



Peonies and Lemons, View to Thorpeness Acrylic 16 x 16 inches

HUGH BOYCOTT-BROWN RSMA (1909-1990)



On the Broads Oil on board 16 x 20 inches



The Inca at Ipswich, 1980 Oil on board 16 x 20 inches

JOHN LINES RBSA RSMA KAS



Different Religions Oil on canvas 15 x 17 inches

JUDITH BRIDGLAND



Cottage with Cow Parsley, Glenlivet Oil on linen 16 x 16 inches

The Inaugural Meeting of the New World Book Club Oil on canvas 36 x 48 inches (right)

Zeus, having decided to destroy humanity with a great flood also chose to spare two individuals; Pyrrha and Deucalion. The Gods had perceived that they had been the most righteous of all people and duly spared their lives, after which they were tasked to re-populate the earth but not before they had opened the inaugural meeting of the 'New World Book Club'

NEIL CUTHBERT BCA(HONS), GRAD. DIP. ED., MFA





Complete Peonies Acrylic on canvas 45 x 45 inches



Fishing Village, Fyfe Acrylic on canvas 31 x 31 inches



Old Reddy (Apple Tree, Spring) Oil on linen 47 x 39.5 inches



Grounded II (Apple Tree, Orchard) Oil on linen 47 x 39.5 inches



At Anchor, Felixstowe Ferry Pastel 16 x 20 inches



Early Spring St James's Park Pastel 16 x 20 inches



Pavilion Lake, Winnebago Oil on canvas 9.5 x 14 inches



A Yacht sailing off Rum Oil on linen 24 x 28 inches

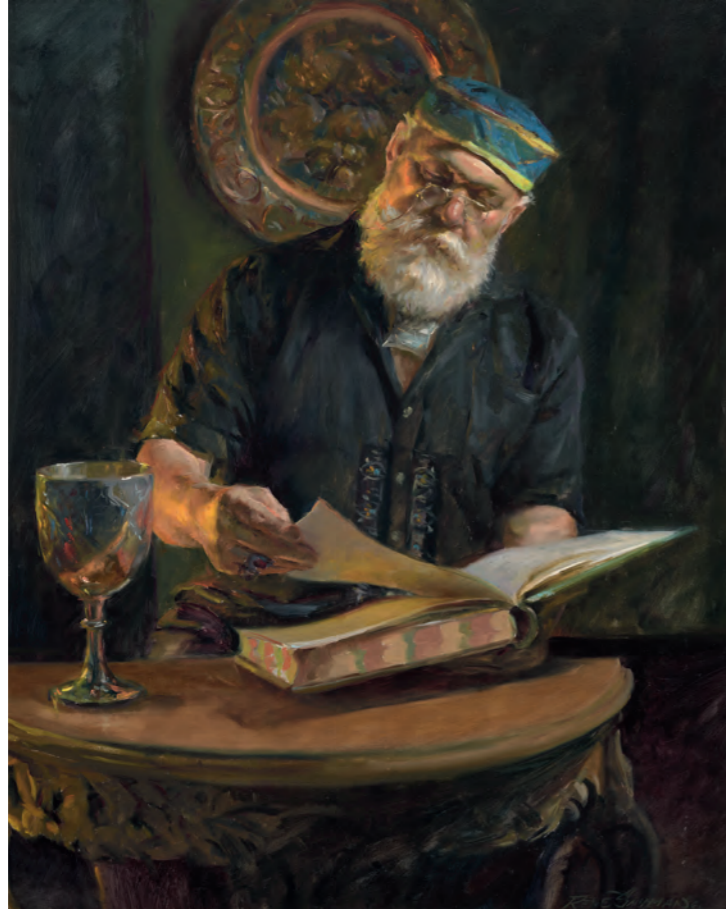


Under Old Trees are the Shadows of Young Leaves Charcoal 37 x 53 inches



The Kindness of Some 2022 Handcut paper collage 22 x 29 inches

RENÉ SNYMAN



The Antiquarian Oil on canvas 36 x 30 inches

RUAN HUISAMEN



Effigy Mixed media on paper 26 x 36 inches

TONY DE WOLF



Plums and Milk Jug Oil on board 14 x 12 inches



Greengages in a Silver Bowl Oil on board 14 x 12 inches

TERENCE CLARKE



Winter in Versailles Oil on canvas 20 x 20 inches

SIMON GARDEN RWA



Lone Figure Oil on panel 13 x 18 inches

ALMA WOLFSON



Lamlash Bay Mixed Media 10 x 12 inches

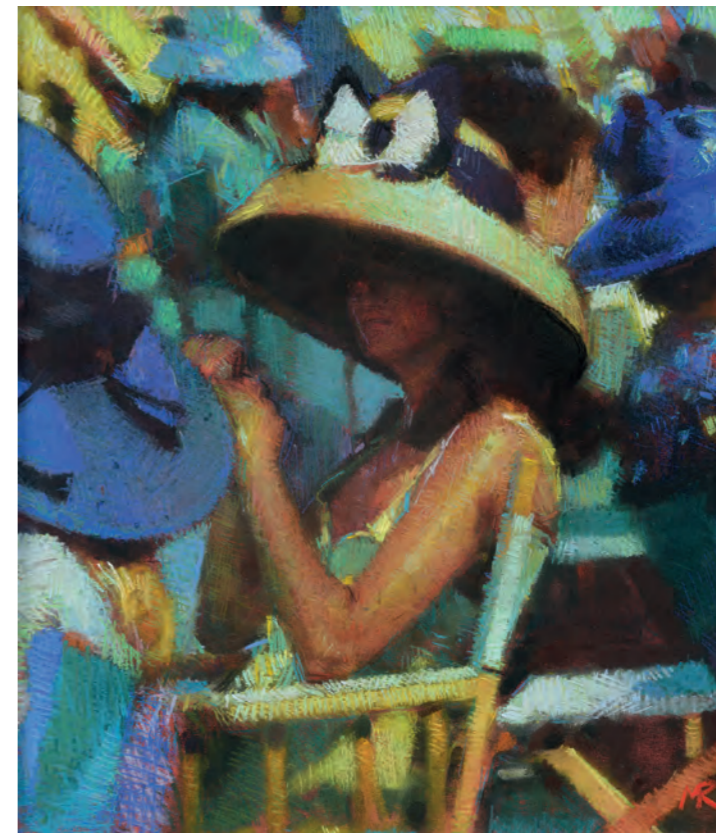
KEITH ROPER PS



Summer Fields Pastel and gouache 12 x 15 inches



Suffolk Fields near Orford Oil on panel 20 x 30 inches



Girl at Henley Pastel 17 x 15 inches

GUS FARNES



Hope (unique)
Bronze 12.5 x 4.5 x 7.5 inches

Sanguine (edition of 3)
Bronze 31.5 x 8.5 x 7 inches (left)

RACHEL ARIF AMAFA



Aldeburgh II Oil on canvas 35.5 x 35.5 inches



Shipyards Facade Oil on canvas 19 x 31 inches



Cafe Chat Acrylic on canvas 24 x 20 inches



Cafe Sun Acrylic on canvas 24 x 20 inches

JAMES HARRIGAN



Alexanders Wee Brown Hen Oil on board 20 x 24 inches



BRUCE YARDLEY *Stalls and Stained Glass, King's College* Oil on canvas 24 x 30 inches

Own Art

The scheme allows people to apply for an interest free loan of up to £25,000 for the purchase of original works of art or craft in any media. No deposit is





MAX TANNAHILL *Sardines* Mixed Media 6 x 11 x 6 inches

THOMPSON'S ALDEBURGH
175 HIGH STREET, ALDEBURGH,
SUFFOLK. IP15 5AN
TEL: +44 (0)1728 453 743
Email: john@thompsonsgallery.co.uk

THOMPSON'S LONDON
3 SEYMOUR PLACE, MARYLEBONE,
LONDON. W1H 5AZ
TEL: +44 (0)207 935 3595
Email: enquiries@thompsonsgallery.co.uk

THOMPSON'S HARPENDEN
13 CHURCH GREEN,
HARPENDEN. AL5 2TX
TEL: +44 (0)1582 329 932
Email: harpenden@thompsonsgallery.co.uk

