

An impressionistic painting of a street scene, likely a market or a busy town square. The scene is rendered with thick, visible brushstrokes and a vibrant, somewhat chaotic color palette. In the foreground, there are various stalls or structures, possibly covered with awnings or umbrellas, in shades of yellow, orange, and red. The middle ground shows a street leading into the distance, flanked by buildings and more stalls. The background features a bright, blue sky with white clouds. The overall style is reminiscent of Impressionist or Post-Impressionist art, emphasizing light and color over fine detail.

THOMPSON'S
LONDON

MICHAEL ADAMSON
School of The Great Lakes

The Bush in the Dining Room

Oil on canvas 50 x 70 inches



MICHAEL ADAMSON

School of The Great Lakes

5th - 15th September 2018

All paintings are for sale on receipt of this catalogue.

More works can be viewed on our website

www.thompsonsgallery.com

THOMPSON'S
LONDON

3 Seymour Place,
Marylebone, London. W1H 5AZ
Tel: +44 (0)207 935 3595
Email: enquiries@thompsonsgallery.co.uk
www.thompsonsgallery.co.uk

Monday to Friday: 10:00 - 18:00
Saturday: 10:30 - 17:30
Sunday: Closed

School of The Great Lakes

Michael Adamson's practice traces the boundaries and explores the borderlands between representation and expression. His paintings present the material in a raw and visceral form- the oil heaped upon canvas, with line and depth employed to convey a sense of place. High culture in the New World were informed by a running narrative of painting, influenced equally by Monet and Riopelle, by Turner and Tom Thompson. The term 'School of the Great Lakes' was coined by a New York art critic noticing an affinity in the clumps of paint and dashes of perspective being laid down by a number of painters including Adamson, Bradford and Doig. Drawing ideas and references from the vast expanses of painting's history, one can see vocabulary and perhaps even a dialect, despite the social diversity, in Adamson's work.

There is a unified culture which blooms from the practice of painting; this series explores aspects of that culture.



Rum Factory Oil on canvas 48 x 60 inches

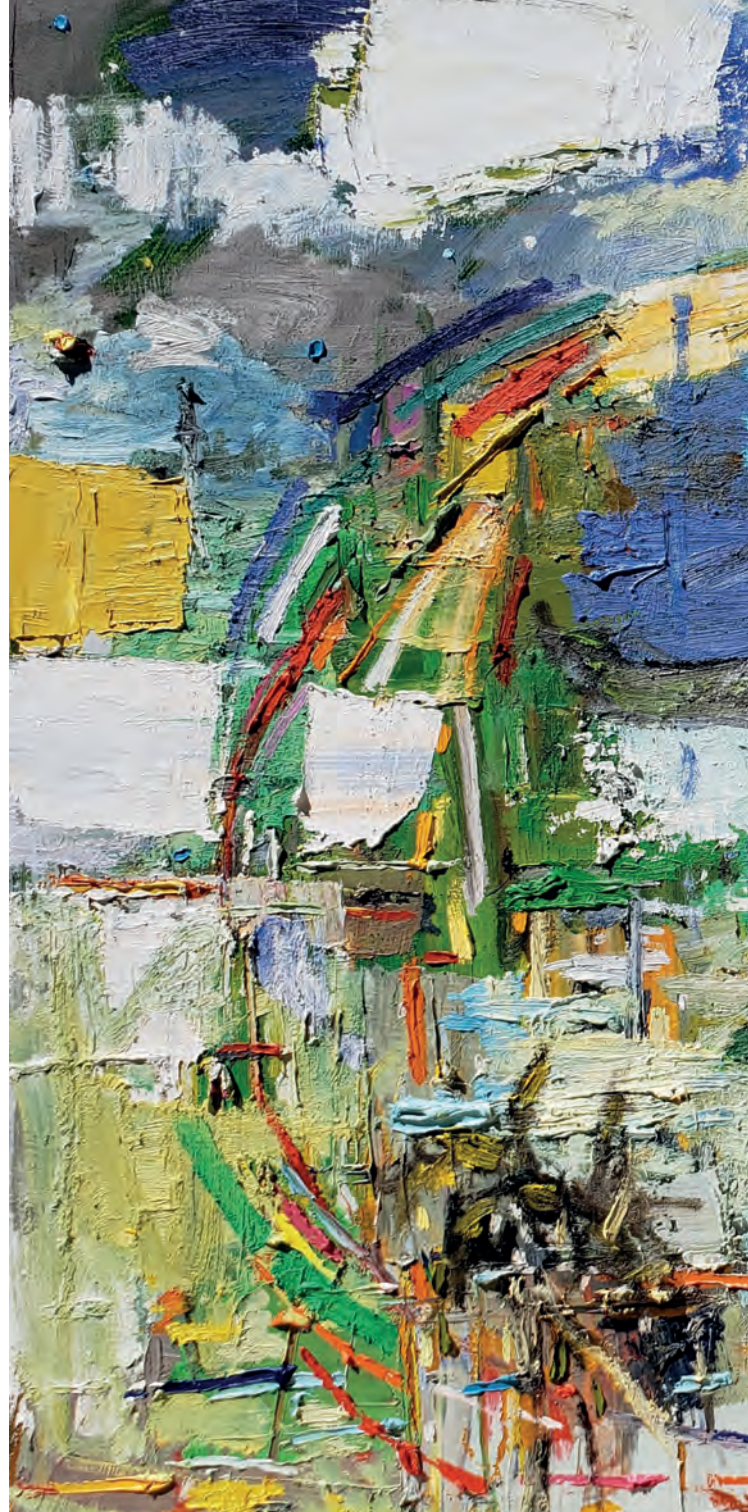


The Crossed Palms Oil on canvas 74 x 54 inches



Mitchell's Old Chair Oil on canvas 60 x55 inches

Emily's Canoe Oil on canvas 48 x 72 inches







The Indian Church Oil on canvas 70 x 50 inches

Own Art

Ask the gallery for more information about instant acquisition with 10 monthly payments, interest free through the OwnArt scheme

www.ownart.org.uk

For more information on the scheme, please contact the gallery.



Coral Chimney

Oil on canvas 55 x 60 inches

THOMPSON'S
LONDON

3 Seymour Place, Marylebone, London, W1H 5AZ Tel: +44 (0)207 935 3595
Email: enquiries@thompsonsgallery.co.uk

175 High Street, Aldeburgh, Suffolk. IP15 5AN Tel: +44 (0)1728 453 743
Email: john@thompsonsgallery.co.uk

www.thompsonsgallery.co.uk

