
THOMPSON'S
ALDEBURGH

MODERN
BRITISH

MODERN BRITISH

The Modern British Art era began after the first World War, an inherently significant cultural period. This epoch saw the rise of painters and sculptors such as Henry Moore, John Piper, Mary Potter, Terry Frost, Sir Robin Philipson, John Bellany, and Mary Fedden to name a few. This period of artistic output contains a range of style and focus- natural subject matter such as landscape and still life remained emphasised; scenes of leisure and enjoyment were prevalent; and those elevating abstraction saw a surge of interest and legitimacy much in part to Picasso's growing influence. Thompson's Gallery has proudly specialised in Modern British Art since its founding in 1982, and invite you to enjoy this expertly selected range of works from this pivotal period.

THOMPSON'S
ALDEBURGH

175 High Street, Aldeburgh
Suffolk. IP15 5AN

Tel: +44 (0)1728 453 743

john@thompsonsgallery.co.uk

www.thompsonsgallery.com

Monday to Friday: 10am - 5pm

Saturday: 10am - 5pm

Sunday: 11am - 5pm

Framed images and the entire exhibition can be viewed on our website,

www.thompsonsgallery.com

All paintings are for sale on receipt of this catalogue

JOHN ARMSTRONG ARA (1893-1973)

John Armstrong is most notable for his Surrealist painting style, debuting in 1928 with a solo show at Leicester Galleries. London's renowned Surrealist dealer Lefevre Gallery exhibited him in 1938, followed by major exhibitions at MoMA (1941) & the RA Memorial Show (1975). Armstrong was elected an ARA in 1975.

Seated Figure Oil on canvas 14 x 10 inches



SIR JOHN ARNESBY BROWN RA (1866-1955)

Sir John Arnesby Brown was a leading English landscape artist, acclaimed for his impressionistic and pastoral landscapes. Arnesby Brown was born in Nottingham in 1866 and first studied at Nottingham School of art in the late 1880s. He continued training at the Bushey School of Art from 1889-93, first exhibiting at the Royal Academy in 1890. He was elected to the ARA (1903), the RA (1915) and knighted for his services to art in 1938. Arnesby Brown lived and painted at his home in Norfolk during the 1930's and even taught Edward Seago; later he moved to St Ives but ceased painting in 1942 due to blindness.

Provenance: Exhibited Royal Academy 1929 No 35. Illustrated in catalogue
Exhibited Norwich Castle Museum 1935 Lent by Lady Young Christies London 2012

End of the Village (Haddiscoe) Oil on canvas 25 x 30 inches

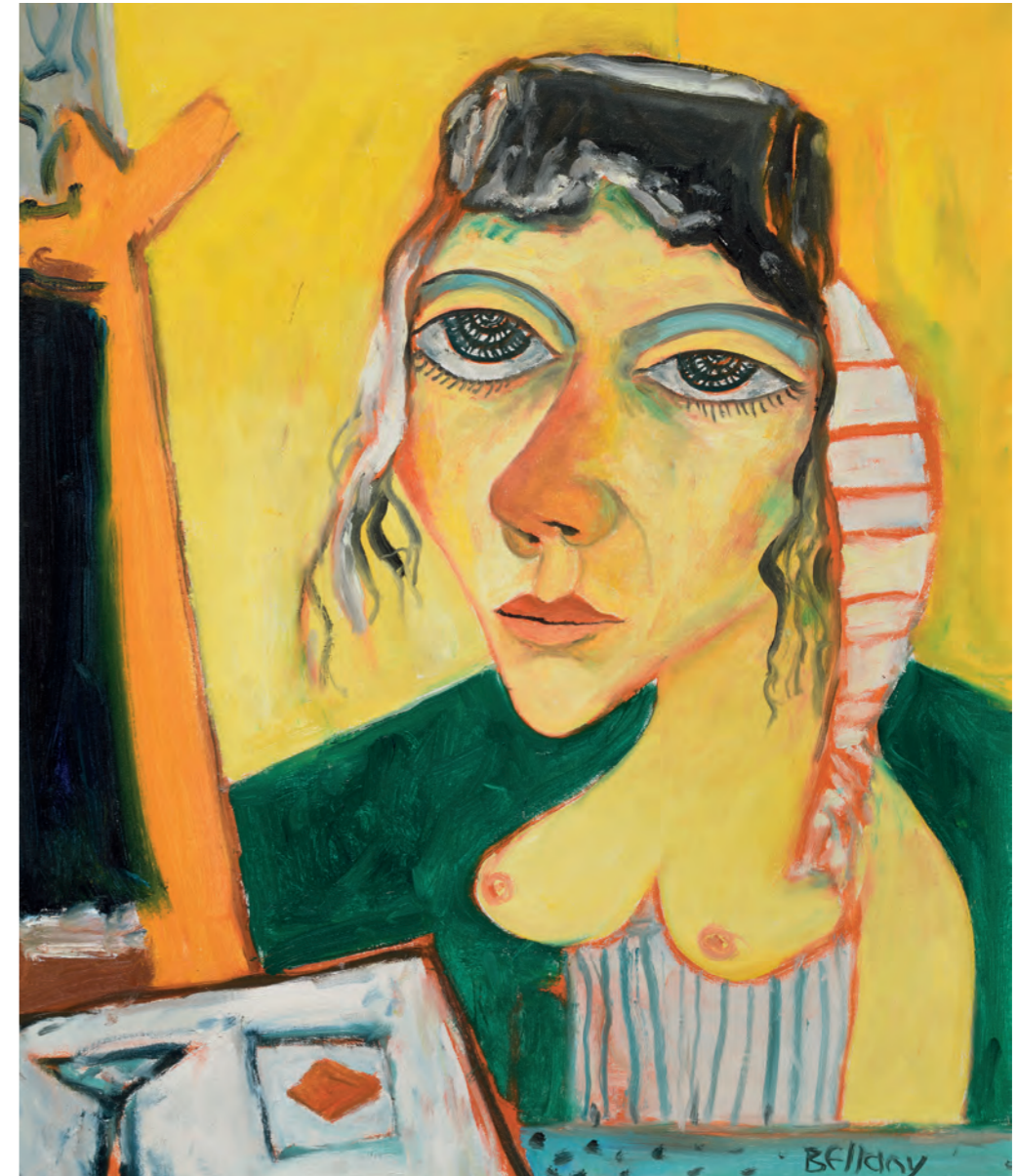


JOHN BELLANY CBE RA HRSA (1942-2013)

John Bellany was born in Scotland to a family of fishermen and became one of the most prolific and influential painters of his generation. Merging Impressionist and Naïve styles, Bellany documented his surroundings with particular interest in Scottish symbolism and history. Bellany's works appear in Tate Britain, National Gallery of Scotland, MoMA, & the Metropolitan Museum of Art. Bellany became an elected RA in 1991, CBE in 1994 and praised by Damien Hurst in 2001 as 'a major painter of the 20th Century'.

Provenance: Solomon Gallery Dublin. City Gallery London

The Game in Yellow Interior Oil on canvas 24 x 20 inches



“I put myself up against the best, I think if you’ve got any talent, you’ve got to choose the most difficult person to learn from, because that’s the only way you’re going to get better at being you.”

John Bellamy

Provenance: Beaux Arts 1999

My Grandmother watercolour and pencil c. 1967 15 x 11 inches



JOHN G BOYD RGI RP (1940-2001)

John G. Boyd is remembered as 'the quiet master of Contemporary Scottish painting'. His works achieved a remarkable amount of both complexity and clarity, regarded by Michael Scott as 'one of the most significant of Post-War painters'. Across a decorated career of both painting and teaching, Boyd achieved 21 solo exhibitions between London, Glasgow, and South Africa. He was elected an RGI in 1982 and to the Royal Society of Portrait Painters in 1989.

Provenance: Private Collection South Africa

Title *Reclining Figure and Boat* Oil on canvas 40 x 48 inches



SIR FRANK BRANGWYN RA RWS RBA (1867-1959)

Sir Frank Brangwyn was a Welsh artist known for his prowess across virtually all mediums in his time- painting, watercolour, printmaking, illustration; even stained glass and furniture. He won multiple medals: third class in the Paris Salon (1891), then Gold in Venice (1897), and another Gold in Paris (1912). He was elected ARA in 1904, RA in 1919, and Knight Bachelor in 1941. For all of his accolades, Brangwyn was self-taught and simply voracious toward new materials and artistic styles. He is celebrated for his natural gift and adventurous spirit toward creativity.

Provenance: Cooling Galleries

Note on reverse stating that this picture was exchanged with the Cooling Galleries for three pictures which the artist did not think representative of his best work.

The Bridge (Pont Vieux, Albi France) Oil on board 20 x 28 inches



FRED CUMING RA NEAC (BORN 1930)

Fred Cuming is lauded as 'the finest landscape painter of his generation' by art critic Tim Binding (to name but one endorsing voice). The product of Sidcup School of Art (1945-49), Cuming was elected ARA in 1969 and RA in 1974. He was honoured as the Royal Academy's 'Featured Artist' for the 2001 Summer Exhibition and has had regular solo exhibitions in London, wider UK, and USA since debuting at Thackeray Gallery, London in 1978. Cuming conveys remarkable amounts of atmosphere in landscape and coastal views, working from his studio in East Sussex.

Winter Landscape Oil on board 24 x 24 inches





Waiting for the Catch Oil on board 24 x 24 inches



Teignmouth Rainbow Oil on board 21 x 24 inches

MARY FEDDEN OBE RA PPRWA (1915-2012)

Mary Fedden was born in Bristol and had childhood aspirations to be a painter. Graduating from Slade School of Art in 1936, Fedden painted sets for stage performances at iconic venues such as Sadlers Wells. She briefly returned to Bristol to teach, but returned to London during the war to serve in the Land Army and the Woman's Voluntary Service. She married artist Julian Trevelyan in 1951 and the pair travelled extensively, continuing their professional painting careers with great exhibiting success. Fedden was elected RA in 1922 and President of the Royal West of England Academy at Bristol from 1984-1988.

Fruit and Flowers 1974 Oil on canvas 16 x 20 inches



*"I really float from influence to influence'
and 'each of my paintings is a mixture
of things that I'm looking at, and my
thoughts and imagination".*

Mary Feddon



Shells, Fruit and Bottles 2009 Oil on canvas 24 x 30 inches

DONALD HAMILTON FRASER RA (1929-2009)

Donald Hamilton Fraser is best known for his palette knife technique painting bright landscapes and ballet dancers. He trained at Central Saint Martin's alongside Auerbach and Kossoff, greatly influenced by the abstract works of Nicolas de Stael. Hamilton Fraser exhibited widely across the UK, USA, Japan and wider Europe. His work appears in world class collections such as that of Her Majesty the Queen, the Smithsonian Institute, Carnegie Institute, and the National Gallery of Australia.

Hilltop Castle Oil on board 19 x 24 inches



*“An artist doesn't really choose
what sort of pictures he paints. He
paints what is there inside him. It is
a sort of imperative.”*

Hamilton Fraser

Provenance: Estate of Sir Kenneth Lady Murray

Night Landscape Oil on paper 12 x 16 inches



SIR TERRY FROST RA (1915-2003)

Sir Terry Frost RA was a Cornish artist whose abstract works elevated the practice to a movement all its own. Working from Newlyn, Frost emphasised the natural light, shape and colours of his surroundings to produce deliberately abstract drawings and collage. Frost didn't become an artist until his 30s, having served in the war before joining the commandos. He was elected an RA in 1992, knighted in 1998 and honoured with an RA retrospective in 2000. Frost is collected by the Tate Galleries, MoMA and National Gallery of Canada as well as private collections worldwide.

"Red and Blue Collage" 2002 Mixed media 5 x 7 inches



JAMES KAY RSA RSW (1858-1942)

James Kay was a Scottish Colourist renowned for his landscapes and his depictions of River Clyde's shipping docks in Glasgow. He represented Britain at the 1910 Venice Biennale with EA Hornel and George Henry, and was known as one of the 'Glasgow Boys'. He exhibited regularly at the Scottish Royal Academy and Glasgow Institute, and travelled and gained wide acclaim throughout Western Europe.

Provenance: T&R Annan & Son

Beach on the Coast of Normandy c.1910 Oil on board 20 x 24 inches



WILLIAM LEE-HANKEY RI RWS ROI (1869-1952)

William Lee-Hankey was a celebrated British landscape painter and book illustrator. He was born in Chester and worked as a designer after schooling at the Chester School of Art and Royal College of Art. He went to Etaples, France in 1904 where he retained a studio for many years as a full time artist. He returned to the UK to live and work in Cornwall, where a burgeoning scene in Newlyn saw his career grow fruitful. He had a remarkable eye for figures and pastoral scenery.

A View at Dieppe Oil on canvas 20 x 24 inches



“He is in his water-colours an absolute purist; he paints entirely with transparent pigments, and never has recourse to opaque colours; his brushwork is broad and confident – free, on the one hand, from affectation of showy cleverness, and, on the other, from niggling minuteness”.

A.L. Baldry

Market Day, Dieppe Oil on canvas 24 x 20 inches



HENRY MOORE FBA RBS OM CH (1898-1986)

Henry Moore is famed for his semi-abstracted figures in sculpture and drawing. Moore was instrumental to introducing modernism to the UK, adopting the 'direct carving' method of Brancusi and Epstein. The reclining figure would be a dominant and defining motif in Moore's practice, in his first journey to America for his MoMA retrospective and along a string of significant commissions afterward in the 1950s. Public commissions such as the UNESCO building in Paris cemented Moore as a household name, as he went on to be the world's most successful living artist at auction for some time.

Seated Woman in Armchair Lithograph 31 x 26 inches



*“Art is the expression of imagination,
not the reproduction of reality”.*

Henry Moore

Seated Woman on Fireside Stool Lithograph 31 x 26 inches



TONY O'MALLEY HRHA (1913-2003)

Tony O'Malley was a self-taught Irish painter whose career flourished from the 1960s in the St Ives artistic community. His work became increasingly colourful and adventurous over time, spending winters in the Bahamas to add vibrant inspiration year-round. He became an honorary member of the RHA in 1990, elected Saoi of Aosdana in 1993 and received an Honorary Doctorate from Trinity College Dublin in 1994. The Irish Museum of Modern art held a major retrospective exhibition of his work in 2005.

Untitled 1977 Mixed media 9 x 12 inches



“Not so much abstract as essence. I could not paint for the sake of the pigment of whatever, but I like abstract form in the painting which instills it with meaning and power.”

Tony O Malley

Provenance: Private collection Dublin

“Lines” 1976 Mixed media 9 x 13 inches



SIR ROBIN PHILIPSON RA RSA FRSE RSW (1916-1992)

Sir Robin Philipson was born in Lancashire and grew up in Scotland, training at Edinburgh College of Art from 1936-40. On the outbreak of WWII he joined the King's Own Scottish Borderers and was posted to India, serving in Burma. After the war he returned to Edinburgh and taught at the College of Art from 1947. Philipson's work has a bold impasto technique, often depicting cathedrals and interiors or figurative studies. He earned numerous honours across his career, including a knighthood for his services to art in Scotland (1976), President of the RSA (1973-1983), and selection to collections of Scottish Academy of Modern Art, Royal Scottish Academy, and North Carolina Museum of Art.

Provenance: Geoffrey Harley Collection study called *The Soldier and the Floosey*.
Relating to major work in Edinburgh City Art Gallery

The Dance Oil on linen 16 x 16 inches



Philipson once spoke of the dread of starting a studio day, of the waiting easel - but then good art is never an easy business -

Elizabeth Cumming
author of "Robin Philipson" 2017

Flight Oil on linen 10 x 14 inches



JOHN EGERTON CHRISTMAS PIPER CH (1903-1992)

John Piper was an English painter and printmaker whose work focused on British landscape, especially churches and monuments. As an official war artist in WWII, Piper's depictions of bomb-damaged churches and landmarks such as Coventry Cathedral made him a household name. His works are held in numerous public collections including the Tate Galleries (where he is also Trustee), who possess 180 alone. Piper's exhibition honours include Festival of Britain (1951), Arts Council mural commission (1957), and stained-glass charges for Eton College and Coventry Cathedral.

Provenance: Private collection South Africa. Signed and certified by Myfanwy Piper 1979

Pot Plants Chalk, Indian Ink and Gouache on paper 24 x 31 inches





Provenance: Marlborough Fine art 1979

Newbold Pacey, Warwickshire Gouache on paper 15 x 22 inches



Provenance: Chis Beetles Summer Show 2003 No.92

Obelisks Watercolour Collage and Wax 16 x 30 inches



Provenance: Inscribed and dated 20/5/1969. Certified on reverse by Myfanwy Piper 8/6/1995

Llaethdy, St David's Mixed media 9 x 11 inches



Foliage Heads 11 Edition 34/75 Screenprint 23 x 31 inches

MARY POTTER OBE (1900-1981)

Mary Potter was an English painter who became known for her restrained palette of subtle colours. A product of Slade School of Art (1919-22), Potter was an early member of the London Group. Over the course of her career Potter's style grew more abstract, enjoying added popularity as abstraction was embraced. She exhibited at Whitechapel Gallery in 1965, Tate Gallery (1980), Serpentine Gallery (1981) and held 12 solo shows at New Art Centre. Potter is collected by the Tate Galleries, Government Art Collection, and Norwich Museum among many other private and public collections.

Provenance: Exhibited New Art Centre

Bracken 1967 Oil on canvas 44 x 34 inches





Provenance Family Collection

Aldeburgh Flagpole Watercolour 4 x 4 inches



Provenance: Family Collection

Grey Window, Toppersfield - Essex Watercolour 11 x 11 inches

WILF ROBERTS (1941-2016)

Wilf Roberts was a Welsh painter from Anglesey, widely admired for his distinctive, impasto style landscapes. Roberts moved to Croydon in 1962 to teach painting and study part time at Croydon Art College. His solo exhibition success in Wales and London continued long after returning to Wales in 1996, with works acquired by public collections in Paris, The Hague, New York and Australia.

Seascape Early Evening, Anglesey Oil on canvas 15 x 23 inches



EDWARD SEAGO RWS RBA (1910-1974)

Edward Seago was a self-taught painter from Norwich who became one of the most popular British artists of the 20th Century. A precocious talent, he won the Royal Drawing Society award at age 14 and joined Bevin's Travelling Show by 18. His career produced a reputation for crowds and queues outside the Colnaghi Gallery and Marlborough Fine Art. Seago's admirers included the British Royal Family and the Aga Khan, on to the general public- he even travelled with Prince Philip on the Royal Yacht Britannia. Seago's works are collected by the Metropolitan Museum of Art, Norwich Museum, and many others – public and private.

Provenance: Taylor Gallery London Christies

The Thames at Henley Oil on board 10 x 15 inches



DOROTHEA SHARP RBA ROI (1874-1955)

Dorothea Sharp was born in Kent and began training in painting at the age of 21, first at C.E. Johnson RI's Richmond school and Regent Street Polytechnic after. Sharp went on to Paris, where the influence of Monet at the Impressionists left a lasting impact on her practice. She became an Associate of the Society of Women Artists in 1903, a full member in 1908, and served as vice-president for 4 years. Sharp exhibited regularly at the Royal Academy, and was inducted as an RBA and ROI. In the 1920s she became strongly associated with the St Ives scene and visited annually until her death in 1955.

Beach Scene Cornwall Oil on canvas 14 x 18 inches



PEGGY SOMERVILLE (1918-1975)

Peggy Somerville was born to British artist and collector parents, and grew up a painting prodigy. At the age of 3, her watercolours exhibited at the Royal Society of Drawing; by 7 one of her paintings was exhibited at the New Irish Salon in Dublin - chosen on merit by judges who knew nothing of her age. By 9 years old, Somerville had her first retrospective at Claridge Gallery, London. Papers from the City to Boston USA hailed her as a child genius. She spent her adult life in Suffolk, taking particular fondness for Aldeburgh. She continued to see success as a British Impressionist painter, working from Suffolk and exhibiting around the UK.

Aldeburgh with the Martello Tower Oil on canvas 10 x 14 inches



GORDON WYLLIE RSW (1930-2005)

Gordon Wyllie was raised in the Scottish countryside, carrying this influence into his painting career which began at Glasgow School of Art (1949-53). Upon graduation Wyllie won the 'Masters' distinction, the Royal Scottish Academy Award, and the most prestigious of all- the Newbery Medal. Wyllie took a scholarship under Ian Fleming in Arbroath, where rolling meadows and nearby fishing villages proved revelatory for the young artist. Wyllie enjoyed a successful exhibiting career and went on to teach and serve as Principal Examiner in Art & Design for Scotland- an influential position he held for many years.

Snow on the Hills, Argyll Mixed media 9 x 9 inches



FRED YATES (1922–2008)

Fred Yates was a self-taught painter known for his plein-air depictions of English landscape. He served in WWII alongside his twin brother, afterward settling in Manchester where he gained local notoriety with fellow naïve painter L.S. Lowry. Attracted to Cornwall's thriving art scene and brilliant weather, Yates moved to St Ives in 1968. His following grew to national levels thanks to the 1985 exhibition 'St Ives 1939-64' at Tate Gallery London. He later moved to Rancon, France for the remainder of his artistic career and received honours such as acquisition by Liverpool University, Brighton and Hove Art Gallery, and the University of Warwick to name but a few.

Cornish Cottage Interior Oil on canvas 24 x 24 inches





At the Seaside Oil on board 14.5 x 19 inches



Playing in the Snow Oil on board 20 x 30 inches

THOMPSON'S
ALDEBURGH

175 High Street, Aldeburgh, Suffolk. IP15 5AN Tel: +44 (0)1728 453 743 Email: john@thompsonsgallery.co.uk

3 Seymour Place, Marylebone, London, W1H 5AZ Tel: +44 (0)207 935 3595 Email: enquiries@thompsonsgallery.co.uk

www.thompsonsgallery.co.uk