

THOMPSON'S
ALDEBURGH — EST. 1982

ANNUAL EXHIBITION 2023



The Fisherman, Milos, Greece Oil on Claessens linen canvas 20 x 24 inches



DAVID GLEESON BA MA RBSA
Two Satsumas
Acrylic on canvas
13 x 23 inches

ANNUAL EXHIBITION 2023

We request the pleasure of your company at the
Private view on Saturday 10th June 10am-4pm
Canapes 11am-1pm

All paintings are for sale on receipt of this catalogue.
More works can be viewed on our website

www.thompsonsgallery.com

THOMPSON'S
ALDEBURGH EST. 1982

175 High Street, Aldeburgh
Suffolk, IP15 5AN
Tel: +44 (0)1728 453 743
graham@thompsonsgallery.co.uk
www.thompsonsgallery.com

Monday to Friday: 10am - 5pm
Saturday: 10am - 5pm
Sunday: 11am - 5pm



Boats on the Deben Oil on linen 24 x 28 inches



Red Sails off Iken Shore Oil on linen 16 x 28 inches



Hope Floats Oil on linen 20 x 24 inches



Letting the Light In, Clay Oil on linen 16 x 16 inches



Cornwall Trevone Bay Oil on board 24 x 36 inches



Studio Evening Oil on board 9 x 9 inches

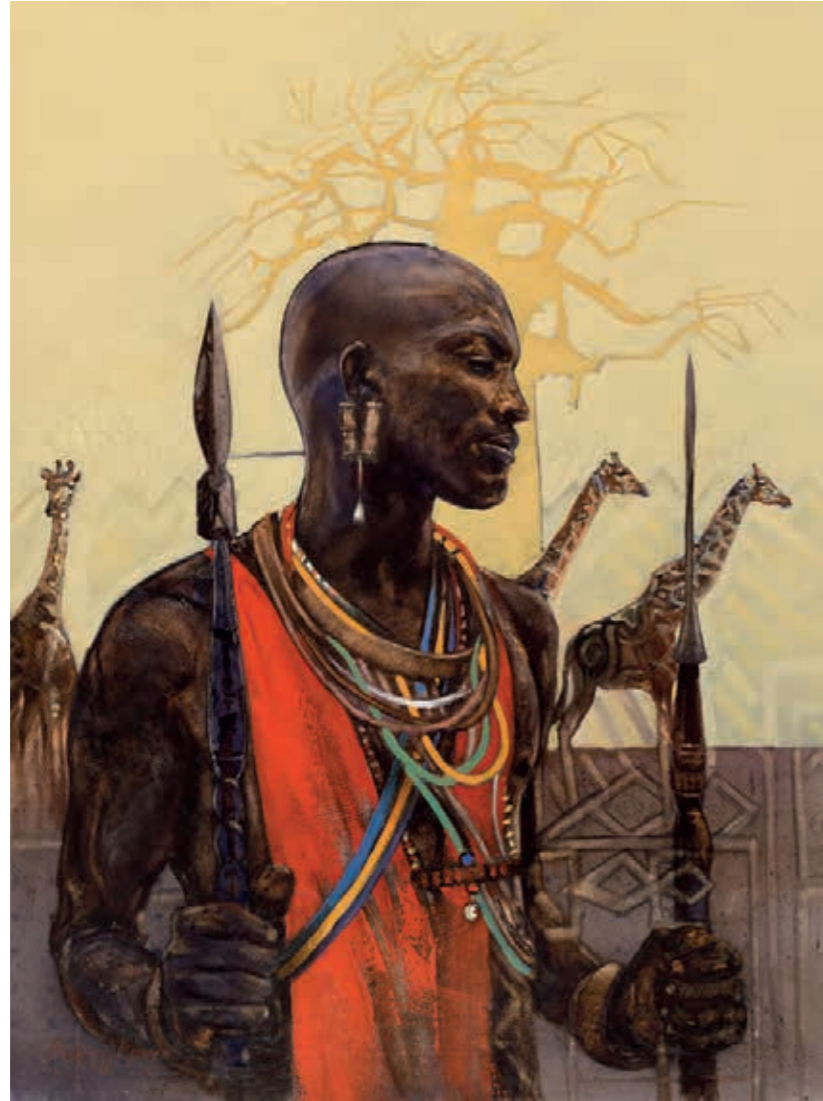


Mother & Child by the Sea Oil on canvas 48 x 36 inches

Boran Bull Oil on canvas 45.5 x 45.5 inches (right)



PIETER KRUGEL



Mtoaji (Provider) Oil on canvas 31 x 24 inches



Bibi Kuwa (Bride to be) Oil on canvas 31 x 24 inches

TERENCE CLARKE



View Through the Pines, Esterel Oil on canvas 32 x 32 inches



Snow in Virginia Oil on canvas 20 x 24 inches



Along the Crag Path, Aldeburgh Oil on board 12 x 16 inches



Aldeburgh Museum from Crabbe Street Oil on board 12 x 16 inches

JONATHAN ROBERTSON



Between Tides Oil on linen 20 x 28 inches



The Netmender Oil on board 12 x 14 inches



Two Vases of Flowers Oil on canvas 20 x 20 inches

The Meeting Oil on canvas 32 x 32 inches (right)





Spring Flowers and Kumquats, Town Beach Acrylic on board 24 x 32 inches

Peonies and Plumbs, Thorpeness Acrylic on board 32 x 24 inches (right)



MURIEL BARCLAY



Tea Time Oil on linen 12 x 14 inches

Dancer Oil on linen 40 x 30 inches (left)



A Windy Morning Oil on board 20 x 20 inches



The Edge of the Wood Oil on board 20 x 24 inches



"H.R.H." Oil on panel 12 x 12 inches

The Great Escape, Skye Oil on panel 20 x 20 inches (left)



Descending Rays, Kitchen Window Series No. 24 Pastel on paper 32 x 37 inches



Watering the House Plants Oil on board 31 x 31 inches



Cottage By The Sea Acrylic on canvas 14 x 18 inches



By Owl-light Acrylic on canvas 19 x 24 inches

Illustrated, Kyffin Williams, The Land & the Sea, page 35

'A field will always be made to look richer if a herd of Welsh Blacks is grazing on it, for the darkness of their coats increase the intensity of the green; but when I painted this picture the sun was going down over the bay and the grass was turning to a more gentle russet.

Paintings of the Welsh landscape of the eighteenth and nineteenth centuries often show cattle in the fields or standing in a river, but these are invariably either red or roan in colour. I suppose they must have been shorthorn and possibly a few red Welsh Blacks. This may sound contradictory but the red genes were apt to be dominant until, by careful breeding, the blacks became more common until now in the twentieth century, it is rare for a Welsh Black cow to have a red calf.

Before the war, when I worked for some of the large estates on the Llyn peninsula, I used to attend the sales of pedigree Welsh Blacks in Menai Bridge. One year an estate wanted a new bull, so one was bought and named Nanhoron Helmet. He was a magnificent animal but unfortunately his progeny tended to be red; so one tragic day the noble Nanhoron Helmet breathed his last in the Pwllheli slaughter house.

I have painted many pictures of Welsh Blacks but strangely they have never been successful when in a green field. This painting, I believe, is more successful than any of them.'



Welsh Blacks, Aberffraw Oil on canvas 20 x 30 inches
Private Collection, Thackeray Gallery, 21st May 1987
Illustrated Kyffin Williams, The Land & The Sea

JOHN PIPER CH (1903-1992)



Dinton Folly (Levinson 367), 1983
Screenprint in colours on wove. Signed and numbered 88/100 in pencil,
printed at Kelpra Studio, . published by Christie's Contemporary Art
19 x 26.5 inches

MARY FEDDEN OBE RA RWA (1915-2012)



Still Life with Milk Jug, 2007 Oil on canvas 15.5 x 19.5 inches
The Portland Gallery, Mary Fedden - A Retrospective, 8-30 May 2008

FRED CUMING RA (1930-2022)



Hastings Pier Oil on board 19 x 25 inches

JOHN MILNE (1931-1978)



Totemic II 1969
Plaster for bronze, painted. 27 x 8.5 x 7 inches
Private Collection, Suffolk
David Lay Penzance c2005
The Sculptures of John Milne,
by Peter Davies, illustrated on page 76



Four Reclining Figures from Homage to Picasso (Hommage à Picasso) ed. IV/XXX signed & dated Lithograph 20 x 30 inches
Private collection, Genoa



Serpents Table No 5 Aug 72. Mixed Media 20 x 30 inches

SIR TERRY FROST RA (1915-2003)

Abstract painting gave Frost a greater freedom to invent, to draw on his emotional response to the observed scene rather than to depict it literally

'Black and Green Borders' painted in 1957; what makes this painting so special is that it was painted during Frost's brief period in Yorkshire. Whereas in Cornwall he felt like a giant in that landscape, and this is reflected in his work for a large part of his life, during this brief period in Leeds he had the opposite response to the landscape around him.

'...going out to Otley and Ilkley Moor and places like that you suddenly become minute in walking in this vast landscape which comes up to place like Girdle Scar... I mean there they are, standing up right in front of you and you are just nothing, you're like a pin head. And that made difference to me, and I think helped me to flatten up, to bring the canvas up much closer and flatter... I didn't stand back and look at it, came right up to it, because that's what I did in the landscape in Yorkshire'

Black and Green Border, 1957 Oil on canvas 71 x 59 inches
Private Collection, Suffolk
Exhibited Olympia 2016
With Belgrave Gallery, Fore Street, St Ives



JOHN CLARK



Did You Remember the Milk Oil on canvas 12 x 16 inches

BEN LOWE



Cove Oil on canvas 39.5 x 39.5 inches

MARION DRUMMOND PAI



A Golden Spring Oil on board 12 x 18 inches

MARGARET GLASS PS



Wind over the Tide, Pin Mill Pastel 13 x 17 inches



Pink Lookout Pastel on paper 18 x 23 inches



Old Whale Wood and Metal 19 x 65 x 3 inches

NORMAN SMITH PS



Arnold's Marsh Oil on board 12 x 13 inches

MIKE HEALEY



Red Table and Garden Still Life Oil on linen 40 x 40 inches

ANIA HOBSON



'Lydia' (Brindle Greyhound) Oil on canvas 15 x 12 inches

JO TAYLOR



Spirit Horse Mixed Media on Paper 33 x 59 inches

PETER KING

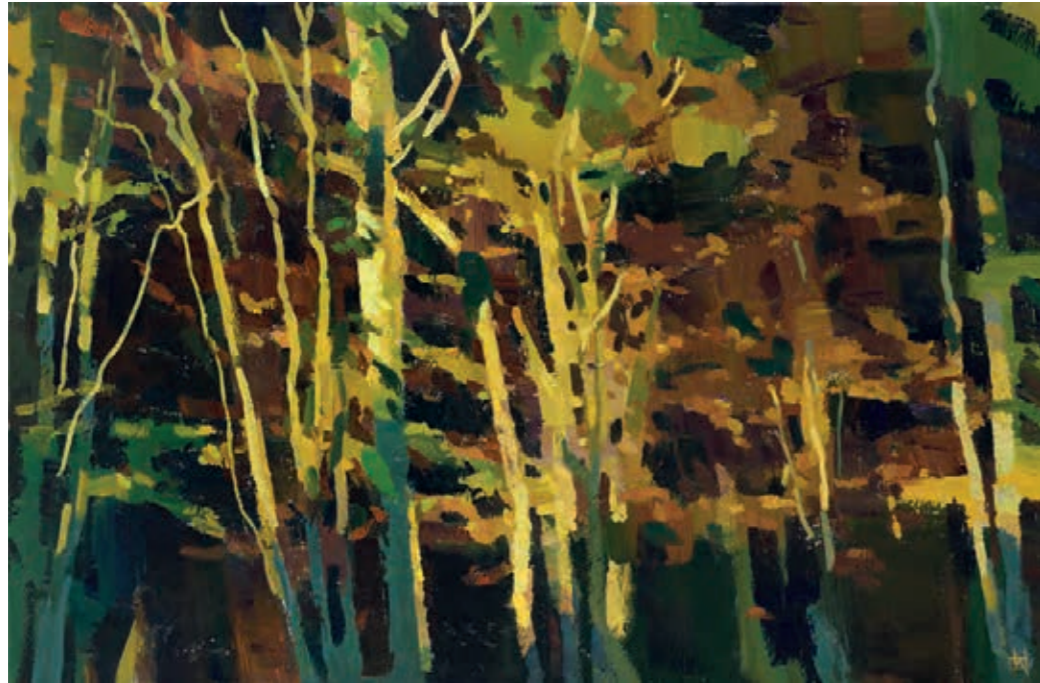


Arran Reflections Oil on canvas 28 x 28 inches

RICHARD DACK EAGMA RSMA RWA



Temple Door Oil on board 28 x 21 inches



Dreams of Light Acrylic on canvas 20 x 29.5 inches



Sleeper Oil on canvas on board 14 x 18 inches



Hellebores in a Tall Vase Oil on board 22 x 13 inches



Vision Advice Oil on canvas 17 x 17 inches

ANGELA HUNTER



Penguin No 1, Ed 15/15
Resin Bronze 21 x 15 x 12 inches

Penguin No 2, Ed 15/15
Resin Bronze 20 x 8 x 16 inches

Penguin No 3, Ed 15/15
Resin Bronze 20 x 15 x 15 inches

MAX TANNAHILL Little Fish
Wood 10 x 3 x 1 inches

ALAN FURNEAUX



Evening Harbour Oil on canvas 30 x 40 inches



The Pink Table Oil on canvas 30.5 x 30.5 inches

Mini Swirly Hair ed.3/19
Bronze 4.5 x 4 x 2 inches



Mini Flip. ed.3/19
Bronze 6 x 3 x 3 inches



Mini The Voice. ed.2/19
Bronze 4.5 x 3.5 x 2 inches



CAROL PEACE

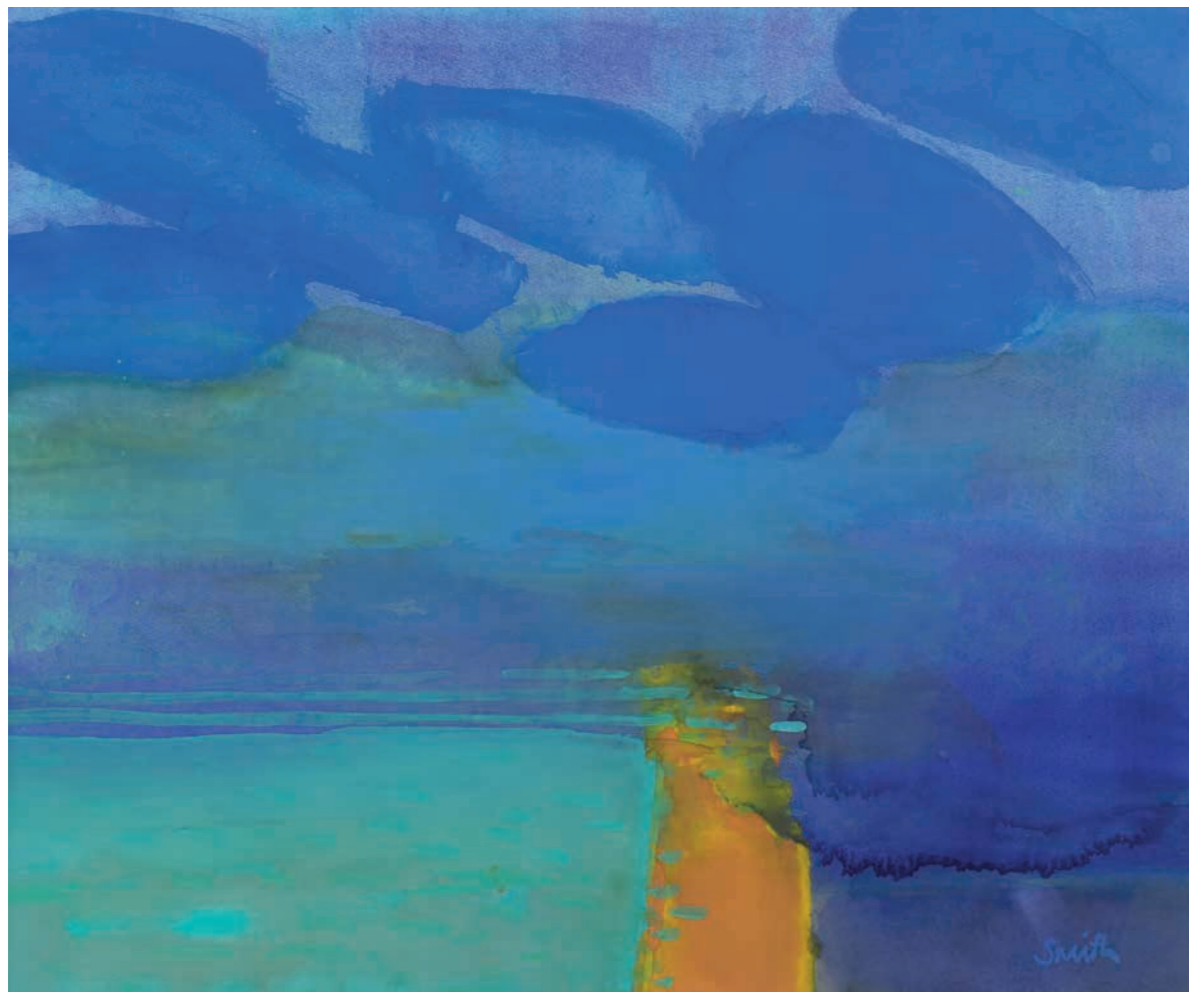


Place III - Edition 11/25 Bronze couple sitting in an Iron resin circle with gold leaf 16.0 x 16.0 x 2.5 inches

TESSA NEWCOMB



An Invitation to a Voyage Oil on board 12 x 24 inches



Inundation Gouache on board 22 x 26 inches



In Nobles Yard Oil on board 24 x 30 inches



Still Life with my Lisbon Jug Watercolour 10.5 x 15.4 inches



Flowers on the Sofa Table Oil on canvas 24 x 20 inches

RICHARD PIKESLEY



River in Spate, Last Sun Oil on board 5 x 12 inches

JENNY MATTHEWS RSW



Garden Favourites Watercolour and collage 24 x 20.5 inches

IAN SEDGE



Lookout Acrylic on canvas 19 x 23 inches

JUDITH BRIDGLAND



White Daisies and Broom, the Campsies Oil on linen 16 x 16 inches



A Little Rosie Oil on canvas 20 x 20 inches



Day to Day Soft pastel on paper 33 x 44" inches

Own Art

www.ownart.org.uk

For more information on the scheme, please contact the gallery.





THEMBALETHU MANQUNYANA
The Scream Mixed Media on canvas
46 x 38 inches

THOMPSON'S ALDEBURGH

175 High Street, Aldeburgh,
Suffolk. IP15 5AN

Tel: +44 (0)1728 453 743

Email: john@thompsonsgallery.co.uk

www.thompsonsgallery.co.uk

THOMPSON'S LONDON

3 Seymour Place, Marylebone,
London, W1H 5AZ

Tel: +44 (0)207 935 3595

Email: enquiries@thompsonsgallery.co.uk

THOMPSON'S HARPENDEN

13 CHURCH GREEN,
HARPENDEN, AL5 2TX

TEL: +44 (0)1582 329 932

Email: harpenden@thompsonsgallery.co.uk