

THOMPSON'S  
LONDON

*Kelsey*

Celebrating his 21st Exhibition  
with Thompson's Galleries







*Tower Bridge in Twilight* Oil on canvas 20 x 30 inches

THOMPSON'S  
LONDON

15 New Cavendish St  
London, W1G 9UB  
Tel: +44 (0)207 935 3595  
Email: [enquiries@thompsonsgallery.co.uk](mailto:enquiries@thompsonsgallery.co.uk)  
[www.thompsonsgallery.co.uk](http://www.thompsonsgallery.co.uk)

Monday to Friday: 10:00 - 18:00  
Saturday: 10:30 - 17:30  
Sunday: Closed

*Kelsy*

## Celebrating his 21st Exhibition with Thompson's Galleries

5th - 21st May 2016

We request the pleasure of your company to join us  
at the Private View  
on Wednesday 4th May  
6-8pm

Please RSVP to [enquiries@thompsonsgallery.co.uk](mailto:enquiries@thompsonsgallery.co.uk)

All paintings are for sale on the receipt of this catalogue.

Please visit our website for the entire exhibition at  
[www.thompsonsgallery.co.uk](http://www.thompsonsgallery.co.uk)

# ROBERT KELSEY

*Over two decades ago a small Scottish painting arrived as part of an opening exhibition of a new joint venture with John Martin in Albemarle Street; little did we know that this was the start of 24 years of successful exhibitions with Robert Kelsey. Robert's paintings have since been sent around the world- from New York to Budapest, Edinburgh to Chicago- collected by individuals and institutions alike. We are delighted to be celebrating this milestone, and to look back over so many shows from Dover Street, our Stow gallery, Marylebone High Street, New Cavendish Street, and of course Aldeburgh.*

*John and Susan Thompson*

Robert Kelsey has established an enviable following and reputation for his sensitive and atmospheric oil paintings, captured with unparalleled accuracy in coastal landscapes of Scotland, the Mediterranean, Suffolk and Cornwall, as well as his recent, extremely popular scenes of London. This latest exhibition of all new work is no exception.

Born in Glasgow in 1949, Robert Kelsey studied fine art at Glasgow School of Art from 1966 to 1970, where his tutors included David Donaldson, Alexander Goudie and James Robertson. Garnering accolades across the years, Kelsey holds a Diploma of Artistic Membership of the Paisley Art Institute (1998), Fellowship of the Royal Society of Arts (2009), an Honorary Masters Degree from the University of the West of Scotland (2010), and has served on the councils of both Paisley Art Institute and Glasgow Art Club, the latter of which he was President between 2012 and 2015.

True to the captivating qualities and philosophy of the Scottish Colourists, whose work he greatly admires and is still influenced by today, Kelsey paints with vigour and feeling to interpret a sense of place through the power of light and colour. 'Light is generally the most important quality,' says Kelsey- 'the main interest and challenge of painting lies in capturing the particular translucency and clarity of light in different parts of the world.' Twelve years on from Kelsey's feature with Thompson's Gallery on BBC Breakfast, this show highlights the continued relevance of one of Scotland's leading contemporary artists, whose enduring commitment to command and reflect both light and colour in his work, continues to shine brightly.



*Beach Grasses, Iona* Oil on canvas 32 x 34 inches





*Snow on Gleniffer Braes* Oil on canvas 12 x 10 inches



*Snow Above Loch Laggan* Oil on canvas 20 x 24 inches





*"One of my most memorable experiences was a visit to Barra a few years ago, where I have family connections. My father was born on the island in 1906. I was immediately overcome by the beauty of this gem of the Outer Hebrides, with the vast flat beach, sparkling emerald water, and huge sky. I also often visit Cornwall, where the light is quite different, while other familiar and inspiring locations include Brittany, Sardinia and the Caribbean."*

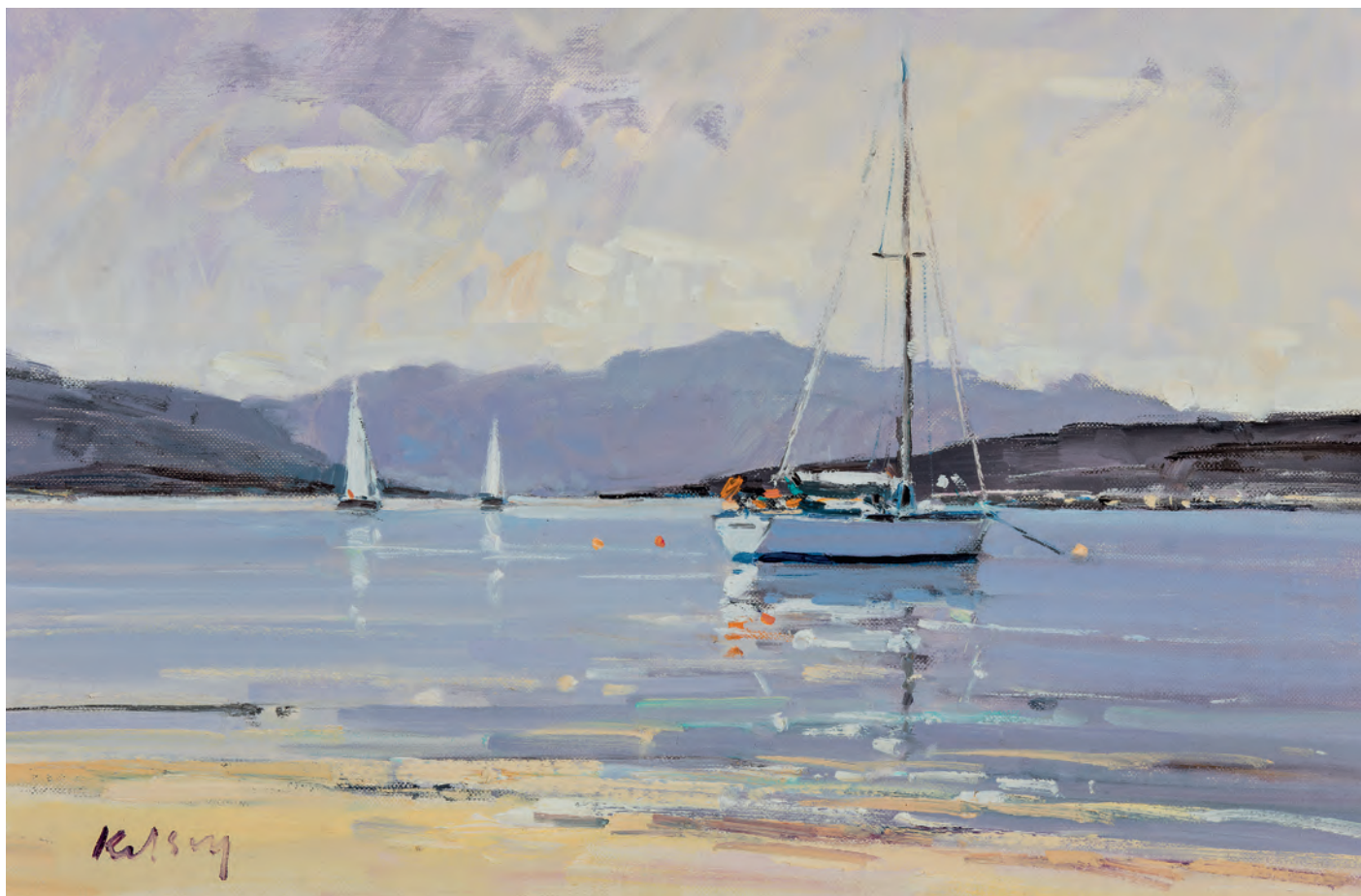
ROBERT KELSEY



*Yellow Sunset, Argyll* Oil on canvas 24 x 28 inches (above)

*The Sound of Iona* Oil on canvas 16 x 20 inches (left)





*Yacht Moored Off Gourock* Oil on canvas 12 x 18 inches



*Windy Beach, Harris* Oil on board 12 x 12 inches





*The Mill at Cley* Oil on canvas 10 x 12 inches



*Boats at Maldon* Oil on canvas 16 x 16 inches





*Boats in Crail Harbour* Oil on canvas 14 x 20 inches



*Beach Huts at Wells next the Sea* Oil on board 12 x 12 inches



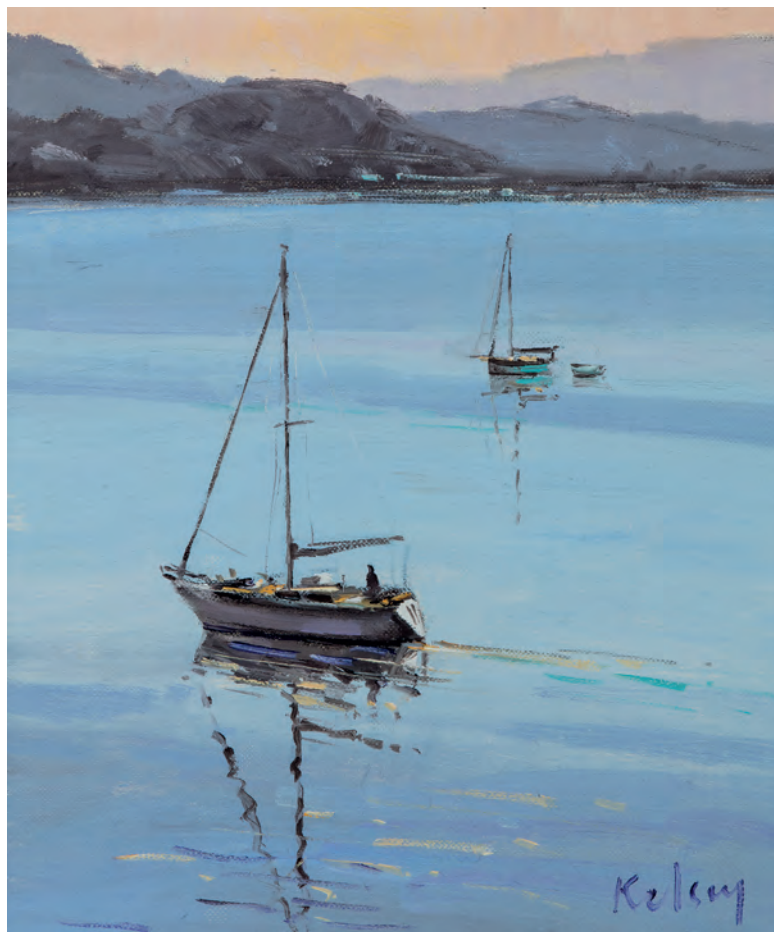


*Evening Mooring, Argyll* Oil on canvas 16 x 16 inches (above)

*Last of the Light, Arisaig* Oil on board 26 x 26 inches (right)







*Boats in the Evening Light* Oil on canvas 12 x 10 inches



*Low Tide, Blakeney* Oil on canvas 16 x 30 inches





*Into the Light, Venice* Oil on canvas 20 x 24 inches (above)

*Venice Twilight* Oil on canvas 30 x 36 inches (right)







*San Marco* Oil on board 15 x 20 inches



*Morning Light, Venice* Oil on canvas 12 x 18 inches





*Gondola Moorings, Venice* Oil on canvas 12 x 12 inches



*San Giorgio* Oil on canvas 12 x 12 inches





*Venice Reflections* Oil on canvas 16 x 16 inches



*Red Poppies* Oil on canvas 12 x 12 inches



*Summer Still Life* Oil on canvas 12 x 12 inches





*Hammersmith Bridge, Spring Light* Oil on board 11 x 14 inches (above)

*Westminster Reflections* Oil on canvas 18 x 20 inches (right)







*St Paul's and the City* Oil on canvas 16 x 16 inches



*The Palace from St James' Park* Oil on canvas 21 x 25 inches





*Blue Evening, London* Oil on canvas 16 x 16 inches



*Flags in the Mall* Oil on canvas 16 x 20 inches



*Shore Cottages, Arran* Oil on canvas 16 x 32 inches







*Evening Sky over Sleat* Oil on canvas 16 x 16 inches



*Small Boats at Brancaster Staithe* Oil on canvas 24 x 28 inches





*The Yacht Club, Brancaster Staithe* Oil on canvas 16 x 16 inches



*Evening Sail, Arisaig* Oil on canvas 20 x 24 inches





*The White Sands of Morar* Oil on canvas 20 x 25 inches



*Eilean Donan Castle in Winter* Oil on canvas 20 x 20 inches



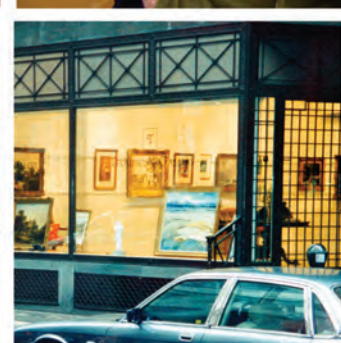


*Boats in the Evening Light, Norfolk* Oil on board 10 x 12 inches



*Isle of Jura* Oil on canvas 20 x 24 inches







THOMPSON'S  
LONDON

15 New Cavendish Street, London. W1G 9UB Tel: +44 (0)207 935 3595 Email: [enquiries@thompsonsgallery.co.uk](mailto:enquiries@thompsonsgallery.co.uk)

175 High Street, Aldeburgh, Suffolk. IP15 5AN Tel: 01728 453 743 Email: [enquiries@thompsonsgallery.co.uk](mailto:enquiries@thompsonsgallery.co.uk)

**[www.thompsonsgallery.com](http://www.thompsonsgallery.com)**